

ISDT®

NP2
SMART CHARGER



NP2 Smart Charger Instruction Manual
NP2智能充电器使用说明书

Thank you for purchasing the ISDT NP2 smart battery charger which is compatible with the SONY NP-BX1, NP-FZ100 and NP-FW50 battery types. The charger is equipped with a wide viewing angle LCD screen which can display the status of the charging process and battery parameters in detail.

The two independent charging channels can charge batteries of different types simultaneously. The ISDT NP2 can also identify the battery model and automatically adapt to the optimal charging parameters and algorithm.

Safety Precautions

Please read these instructions and warnings before using this product:

1. Keep the charger away from sources of heat and damp environments during use. Ventilation is necessary for heat dissipation.
2. Please do not allow children to operate the charger.
3. Do not attempt to charge incompatible batteries with this battery charger. Attempting to do so as can cause damage to the charger or battery, or even result in disastrous consequences;

1. Channel 1 operation key
2. Channel 2 operation key
3. Channel 1 battery slot
4. Channel 2 battery slot
5. LCD display screen
6. USB Type-C power supply input port

Charger Specification

Model type: NP2

Power supply input port: USB Type-C

Input voltage: 5~12V

Compatible USB adapter: 5V/1.0A, 5V/2.0A, QC 2.0/3.0

Max charge current: 1.5A /Slot

Max input power: 18W

Charging mode: normal mode/quick mode

Compatible battery type: NP-FZ100, NP-FW50, NP-BX1

Display: 240 x 240 IPS LCD

Working temperature: 0°C - 40°C

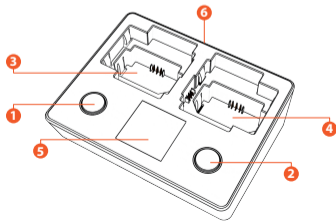
Size: (L x W x H) 112 x 91 x 33.5mm

Weight: 115g

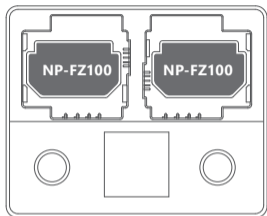
Operation Instruction

In this charger, two batteries can be charged in different modes in various combinations.

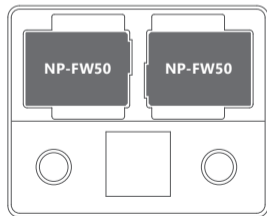
1. Connect the USB type-C cable and USB power adapter, then the NP2 will be ready for charging. NP2 supports a variety of USB power adapters and automatically identifies and matches the input power.



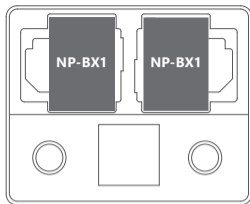
2. Insert batteries into the battery slot as shown below. The NP2 supports mixed charging of different types of batteries and can automatically identify and adjust charging parameters.



Insertion diagram for NP-FZ100

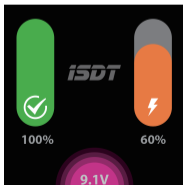


Insertion diagram for NP-FW50

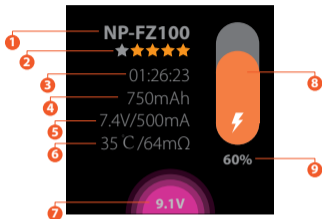


Insertion diagram for NP-BX1

3. After correctly inserting a battery, the charger will beep and sound the prompt tone. Default charging mode will start automatically without setup. To enter Fast Charging mode, press the channel operate button for a few seconds and the selected channel will switch into fast charging mode. Please note that the actual charging current is limited by the output wattage of the USB adaptor. The maximum input wattage is 18W when using a standard adaptor which supports QC 2.0/3.0. It can automatically allocate a maximum 75% wattage after the channel has been activated in fast charging mode.



4. To view detailed charging parameters for individual batteries, press the corresponding operate button to display the screen showing charging parameters and battery status details as described below:



Display details

1. Battery type
2. Health rating of the battery
3. Charging elapsed time
4. Charge Capacity
5. Charging voltage and current
6. Temperature and electrical resistance
7. USB/Type C input voltage, the colour of this area will turn purple when connecting with a QC adaptor.
8. Charge Status Bar, the bar is an orange colour in standard charging mode and purple when in fast charging mode. It turns green when charging is complete.
9. Battery charge percentage.

Battery Health Rating

During charging, the charger will rate the battery according to the internal resistance of the battery, and the full score is five stars in white. After the charging cycle is complete, the charger will evaluate the health of the battery based on the electrical resistance and the accumulated charge capacity. Five stars in the top rating.

Standby Mode

When the charger is in standby mode or if the charge cycle has finished and the inserted batteries are fully charged, the brightness of the display backlight will drop to the lowest level after five minutes of inactivity. Inserting or removing a battery or pushing any button will wake up the charger from standby mode.

Capacity Limiting

For the health of the battery and for general safety, the charger will cut off the charge current automatically and display a warning message when the applied charge exceeds that of the capacity of the battery being charged.

Battery Level Checking

When the charger is not connected to USB power, if you want to check the status of a battery, the battery can be inserted into the battery slot and with a long press of either key, you can look at the battery level. The screen will turn off after five seconds to save battery consumption.

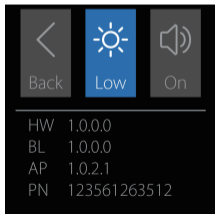
Note: for NP-BX1 batteries, it is necessary to load another NP-FW50 or NP-FZ100 battery in another position to display the power correctly.

NP2 Battery Charger Charging

Battery Type	NP-FZ100	NP-FW50	NP-BX1
Full charge voltage	8.40V	8.40V	4.20V
General mode maximum charge current	1000mA	500mA	600mA
Normal mode maximum charge current normal mode (approximate full charge time)	2.5h	2.5h	2.5h
Maximum charging current in fast mode	1500mA	800mA	1000mA
A full charge in fast mode (approximate full charge time)	1.5h	1.5h	1.5h

System Setting

When the charger does not have a battery inserted, long press the two channel selection buttons to enter the system setting interface.



In the system setting interface, press the first channel button to switch the selected option, and press the second channel button to set the selected option parameters.

< Return to the previous

☀ Display brightness Settings, there are three options: low, medium, high

🔊 Beeper volume setting with both on and off options

HW Hardware version BL Boot version

AP App version PN PN code

Firmware Update

ISDT continually strive in the pursuit of perfection on all products. Our R&D engineers concentrate their effort over days and months on the enhancement of the functions and algorithms, as well as the visual optimization. Continuous improvement of the performance is shaped up in the firmware upgrade program. Latest upgrade firmware can be downloaded from the ISDT official website:

The upgrade steps of NP2 smart charger are as follows:

1. Connect PC and NP2 with USB type-C data cable;
2. Start the firmware update program and update the firmware to NP2 according to the software guidelines;

Packaged Items

1. NP2 smart charger
2. USB type-C cable

All pictures, statements and text information of this product are for reference only. Please refer to the actual information on the official website www.isdt.co. ISDT reserves the right for final explanation and modification of the specification.

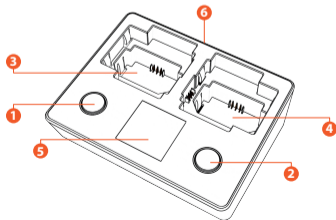
感谢您购买ISDT NP2智能充电器

NP2可兼容索尼NP-BX1, NP-FZ100及NP-FW50三种型号电池, 并配备高可视角度LCD显示屏, 能显示详尽的充电过程及电池参数。两个通道可同时安装不同型号电池进行充电, 并能够自动识别电池型号匹配最优充电参数及算法。

安全注意事项

在使用本产品之前, 请阅读以下说明和警告;

- 1) 使用过程中确保充电器远离热源及潮湿环境, 并注意通风散热;
- 2) 请切勿让儿童操作充电器;
- 3) 请勿尝试使用本充电器对不兼容的电池进行充电, 以免导致充电器或电池损坏, 甚至发生灾难性后果;
- 4) 连接充电器的USB电源适配器必须确保与USB规范相符。



- 1) 通道1操作键
- 2) 通道2操作键
- 3) 通道1电池安装位
- 4) 通道2电池安装位
- 5) LCD显示屏
- 6) USB Type-C电源输入口

产品规格

电源输入接口: USB Type-C

输入电压范围: 5~12V

兼容USB适配器: 5V/1.0A, 5V/2.0A, QC 2.0/3.0

最大充电电流: 1.5A/通道

最大输入功率: 18W

充电模式: 普通模式, 快速模式

兼容电池型号: NP-FZ100, NP-FW50, NP-BX1

显示: 240 x 240 IPS LCD

工作温度: 0°C - 40°C

尺寸: (长 x 宽 x 高) 112 x 91 x 33.5毫米

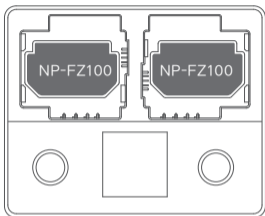
重量: 115g

操作指引

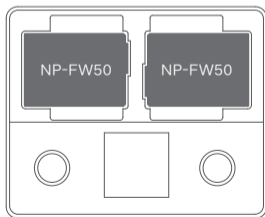
在此充电器中, 可以以多种组合方式对两节电池进行不同模式的充电操作。

- 1) 将本产品配套的USB Type-C线缆与USB电源适配器连接, NP2即上电并进入工作状态。NP2支持多种规格USB电源适配器, 并能自动识别并匹配输入功率。

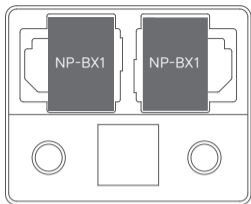
2)将不同类型的电池按照下图安装方式装入电池安装槽，NP2支持不同类型电池混装，可自动识别及自动调整充电参数。



NP-FZ100电池安装图

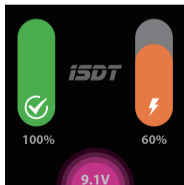


NP-FW50电池安装图

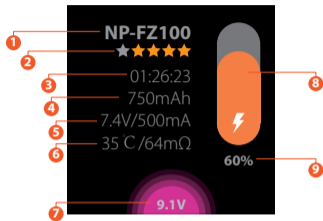


NP-BX1电池安装图

3)电池安装可靠后，蜂鸣器会响起提示声音，无需手动设定，充电器自动对已安装的电池进行普通模式充电。当需要对电池进行快速充电时，需要长按对应的通道操作按键，相应通道将切换到快速充电模式工作。实际的充电功率会受限于已接入的USB适配器输出功率，对于支持QC 2.0/3.0标准的适配器，NP2最大可获得18W的输入功率。被激活的快充模式通道，最高可自动分配到75%的充电功率。



4)短按对应通道的操作按键,可切换显示该通道的详细充电及电池状态信息,具体描述如下:



界面释义:

- 1)当前通道电池型号
- 2)当前通道电池健康度评分
- 3)已充电时间
- 4)电池电量
- 5)当前电池电压及充电电流
- 6)电池内阻及温度
- 7)USB Type-C输入电压,当连接Quick Charge适配器时此区域背景变为紫色
- 8)电池电量条,普通充电时电量条为橙色,当处于快充模式时此电量条显示为紫色,充满后变为绿色
- 9)电池电量百分比

电池健康度评分

充电过程中,充电器会根据电池的内阻进行电池评分,满分为五颗星全为白色。当电池充满后,充电器会根据电池的内阻和充入电池的电量进行电池评分,满分为五颗星全为橙色。

待机模式

当充电器未安装电池或已安装电池全部已充满,五分钟内不对充电器进行操作,充电器会自动将显示屏背光设为最低,进入待机模式以节省电源消耗。在待机模式下安装、移除电池或按动任意按键,将自动唤醒充电器。

容量限制

当充电器充入电池的电量远大于将电池充满所需的电量时,为了电池健康和人身安全,充电器会自动切断充电电流,并提示警告信息。

查看电池电量

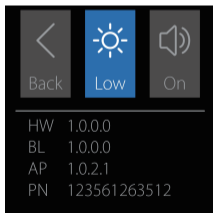
当充电器未接入电源时,若想查看电池电量,可将电池放入电池插槽,长按任一按键,可以查看电池的电量,五秒钟之后充电器会自动熄灭屏幕以节省电池消耗。
注:对于NP-BX1电池,需要再另一仓位装入一颗NP-FW50或NP-FZ100电池后方可正确显示电量。

充电器充电参数

电池型号	NP-FZ100	NP-FW50	NP-BX1
充电截止电压	8.40V	8.40V	4.20V
普通模式最大充电电流	1000mA	500mA	600mA
普通模式充满大约需要时间	2.5小时	2.5小时	2.5小时
快速模式最大充电电流	1500mA	800mA	1000mA
快速模式充满大约需要时间	1.5小时	1.5小时	1.5小时

系统设定

在充电器未安装电池状态下，同时长按两个通道选择按键即可进入系统设置界面。



在系统设定界面下，按下第一通道按键可以切换选中项，按下第二通道按键可以对选中选项进行参数修改

< 返回上一界面

☀ 显示屏亮度设定，有低，中，高三个选项

🔊 蜂鸣器音量设定，有开和关两个选项

HW 硬件版本 BL 引导程序版本号

AP 应用程序版本号 PN 产品PN码

固件升级

ISDT出品的所有产品均在追求极致体验的道路上步履不停，每一次功效的提高，算法的提升，视觉的优化，都是研发工程师日积月累的成果，将它们累积在固件更新包中，在ISDT官网，你可以下载到最新的固件升级程序

NP2智能充电器升级步骤如下：

- 1)用USB Type-C数据线将PC与NP2连接好；
- 2)开启固件更新程序，按软件指引将固件更新到NP2

包装内物品

请确认包装内包含下列物品：

NP2智能充电器；

USB Type-C连接线。

*本产品的所有图片，陈述及文字信息仅供参考，请以官网www.isdt.co实际信息为准。深圳艾斯特创新科技有限公司拥有对说明书内容的最终解释权和修改权。



www.isdt.co

深圳艾斯特创新科技有限公司
Shenzhen ISD Technology CO.,LTD

Address: 5th Fl., Bldg. 9, Mabian Industrial Zone, Yangtian Rd.,
Block 72, Xin'An Street, Bao'An District, Shenzhen, PRC
Email: hi@isdt.co

NP2电池兼容型号 NP2 Compatible Camera list

电池型号 Battery type	兼容相机列表 Compatible Camera list
NP-FZ100	ILCE-7M3, ILCE-7RM3, ILCE-9
NP-FW50	ILCE-6000 / 6300 / 6500 / 5000 / 5100 / 7 / 7M2 / 7S / 7SM2 / 7R / 7RM2 / QX1 DSC-RX10 / RX10M2 / RX10M3 / RX10M4 NEX-C3 / F3 / 3N / 5C / 5N / 5R / 5T / 6 / 7 α33, α35, α37, α55, α3000
NP-BX1	DSC-RX1 / RX1R / RX1RM2 / RX100 / RX100M2 / RX100M3 / RX100M4 / RX100M5, DSC-RX100M6 / HX350 / WX500 / HX90 / WX350 / HX60 / H400 / HX400 / HX50 / HX300, HDR-CX405 / PJ410 / MV1 / AS300 / AS50 / GWP88E / CX240E / PJ240E / AS200V, FDR-X3000 / X1000V